

Changes for the Better



Mitsubishi Integrated FA Software

GX IEC Developer Version 5

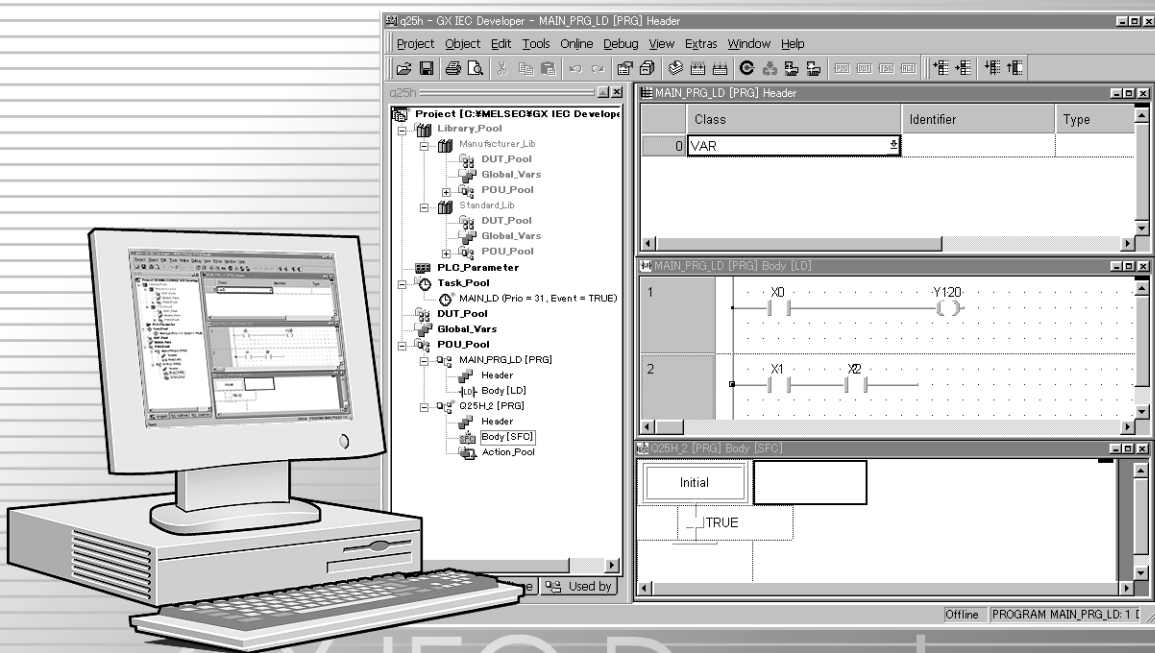
2002 No.181E

NEW PRODUCT RELEASE



Version up!

Increased features for GX IEC Developer



Extended range of compatible CPU

▶▶▶ Compatible with Q00JCPU, Q00CPU, Q01CPU.

Multiple PLC system

▶▶▶ Realizing more advanced control by multiple PLC system.

Improved maintenance

▶▶▶ QCPU ROM Boot settings is supported.

Enhanced diagnostic function

▶▶▶ Includes newly added Ethernet and CC-Link diagnostic functions.

[Features]

1. Extended range of compatible CPU

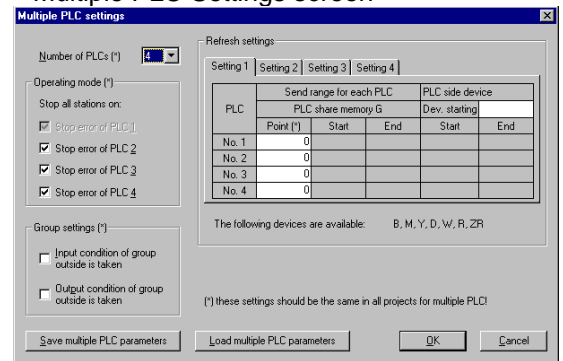
GX IEC Developer Version5 is now compatible with Basic model QCPU (Q00JCPU, Q00CPU, Q01CPU).

PLC Series	Compatible CPU
Q Series PLC	Q00J, Q00, Q01 New! Q02, Q02H, Q06H, Q12H, Q25H,
QnA Series PLC	Q2A, Q2AH, Q2A-S1, Q2AH-S1, Q2AS, Q2ASH, Q2AS-S1, Q2ASH-S1, Q3A, Q4A, Q4AR
A Series PLC	A2AS, A2AS-S1, A2AS-S30, A2AS-S60, A2US, A2US-S1, A2US-S30, A2US-S60, A2A, A2A-S1, A2U, A2U-S1, A3A, A3U, A1N, A2C, A2N, A3N, A1S, A1A-S1, A2S, A2S-S1, A1SH, A1SJH, A2SH, A2SH-S1
FX Series PLC	FX, FX2, FX0, FX0S, FX0N, FX1N, FX1S, FX2N, FX2NC, FXU, FX2U, FX2C

2. Multiple PLC system

MELSEC-Q Series High Performance Model QCPU (Q02CPU, Q02HCPU, Q06HCPU, Q12HCPU, Q25 HCPU) multiple PLC system feature is utilized to realize more advanced control.

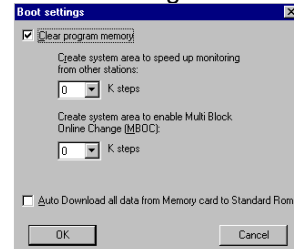
Multiple PLC Settings screen



3. Improved maintenance

Boot settings for QCPU ROM can now be set within the software.

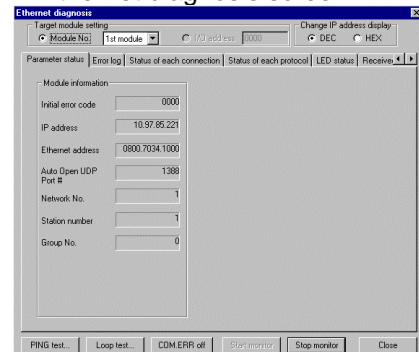
Boot settings screen



4. Enhanced network diagnostic function

Includes newly added Ethernet and CC-Link diagnostic screens. This enables easy online monitoring and fault diagnosis of the Ethernet/CC-Link network.

Ethernet diagnosis screen



[Recommended operating environment]

Item	Descriptions
Computer main unit	Pentium II 350MHz processor or higher
Required memory	32MB RAM (Microsoft Windows 95/98/Me) 64MB RAM (Microsoft Windows NT Workstation 4.0/2000 Professional)
Applicable interface	Serial interface (RS-232)
Available hard disk space	Minimum 100MB
Disk drive	CD-ROM drive
Display resolution	17"(43 cm) VGA monitor (1024×768 pixels)

[Compatible operating systems for GX IEC Developer]

GX IEC Developer Version5 is a 32-bit product compatible with following operating systems;

Microsoft Windows version 95/98/Me (with ServicePack 1 or higher) *1
Microsoft Windows NT Workstation 4.0 (with ServicePack 6 or higher) *1
Microsoft Windows 2000 Professional (with ServicePack 2 or higher) *1

*1: Based on single-byte character sets (English, German, French, etc.)

Restriction:

GX IEC Developer Version5 does not work with double-byte character environment, i.e., Japanese environment.

[Packing list]

Product name	Model	Model code
GX IEC Developer Version5	SW8D5C-MEDOC3-E	13PW57

[Manual]

Manual name	Manual supply status	IB/SH No.	Model code
GX IEC Developer Version5 Beginner's Manual	Sold separately *2	SH-080322E-A	13JV01
GX IEC Developer Version5 Reference Manual	Sold separately *2	SH-080321E-A	13JV00

*2: This product includes the manual data in PDF format. In addition, Acrobat Reader, the software needed to view PDF format document on a personal computer, is included. The printed manual is also available separately.

Notes

Microsoft, Windows, Windows NT are the registered trademarks of Microsoft Corporation in the United States and other countries.

Adobe, Acrobat is a registered trademark of Adobe Systems Incorporated.

Company names and product names in this document are the trademarks or registered trademarks of the respective company.

Also, ® and TM are omitted in the sentence of this NEW PRODUCT RELEASE.

Country/Region	Sales office	Tel/Fax
U.S.A	Mitsubishi Electric Automation Inc. 500 Corporate Woods Parkway Vernon Hills, IL 60061	Tel : +1-847-478-2100 Fax : +1-847-478-0328
Brazil	MELCO-TEC Rep. Com.e Assessoria Tecnica Ltda. Av. Rio Branco, 123-15 ,and S/1507, Rio de Janeiro, RJ CEP 20040-005, Brazil	Tel : +55-21-221-8343 Fax : +55-21-221-9388
Germany	Mitsubishi Electric Europe B.V. German Branch Gothaer Strasse 8 D-40880 Ratingen, GERMANY	Tel : +49-2102-486-0 Fax : +49-2102-486-717
U.K	Mitsubishi Electric Europe B.V. UK Branch Travellers Lane, Hatfield, Herts., AL10 8XB,UK	Tel : +44-1707-276100 Fax : +44-1707-278695
Italy	Mitsubishi Electric Europe B.V. Italian Branch Centro Dir. Colleoni, Pal. Perseo - Ingr.2 Via Paracelso 12, 20041 Agrate B., Milano, Italy	Tel : +39-039-60531 Fax : +39-039-6053312
Spain	Mitsubishi Electric Europe B.V. Spanish Branch Carretera de Rubi 76-80 08190 - Sant Cugat del Valles, Barcelona, Spain	Tel : +34-935-653135 Fax : +34-935-891579
South Africa	Circuit Breaker Industries LTD. Private Bag 2016, Isando 1600, Johannesburg, South Africa	Tel : +27-11-928-2000 Fax : +27-11-392-2354
Hong Kong	Ryoden Automation Ltd. 10th Floor, Manulife Tower, 169 Electric Road, North Point, HongKong	Tel : +852-2887-8870 Fax : +852-2887-7984
China	Ryoden International Shanghai Ltd. 3F Block5 Building Automation Instrumentation Plaza 103 Cao Bao Rd. Shanghai 200233 China	Tel : +86-21-6475-3228 Fax : +86-21-6484-6996
Taiwan	Setsuyo Enterprise Co., Ltd. 6F., No.105 Wu-Kung 3rd.RD, Wu-Ku Hsiang, Taipei Hsine, Taiwan	Tel : +886-2-2299-2499 Fax : +886-2-2299-2509
Korea	HAN NEUNG TECHNO CO.,LTD. 1F Dong Seo Game Channel Bldg., 660-11,Deungchon-dong Kangsec-ku, Seoul, Korea	Tel : +82-2-3660-9552 Fax : +82-2-3664-8372
Singapore	Mitsubishi Electric Asia Pte, Ltd. 307 ALEXANDRA ROAD #05-01/02, MITSUBISHI ELECTRIC BUILDING SINGAPORE 159943	Tel : +65-473-2480 Fax : +65-476-7439
Thailand	F. A. Tech Co.,Ltd. 898/28,29,30 S.V.CITY BUILDING,OFFICE TOWER 2,FLOOR 17-18 RAMA 3 ROAD,BANGKONGPANG,YANNAWA,BANGKOK 10120	Tel : +66-2-682-6522 Fax : +66-2-682-6020
Indonesia	P.T. Autoteknindo SUMBER MAKMUR JL. MUARA KARANG SELATAN BLOK A UTARA NO.1 KAV. NO.11 KAWASAN INDUSTRI/ PERGUDANGAN JAKARTA - UTARA 14440	Tel : +62-21-663-0833 Fax : +62-21-663-0832
India	Messung Systems Put,Ltd. Electronic Sadan NO:111 Unit No15, M.I.D.C BHOSARI,PUNE-411026	Tel : +91-20-7128927 Fax : +91-20-7128108
Australia	Mitsubishi Electric Australia Pty. Ltd. 348 Victoria Road, PostalBag, No 2, Rydalmere, N.S.W 2116, Australia	Tel : +61-2-9684-7777 Fax : +61-2-9684-7245

MITSUBISHI ELECTRIC CORPORATION

HEAD OFFICE : 1-8-12, OFFICE TOWER Z 14F HARUMI CHUO-KU 104-6212, JAPAN
NAGOYA WORKS : 1-14, YADA-MINAMI5, HIGASHI-KU, NAGOYA, JAPAN